

# APOLLO

intelligent security solutions

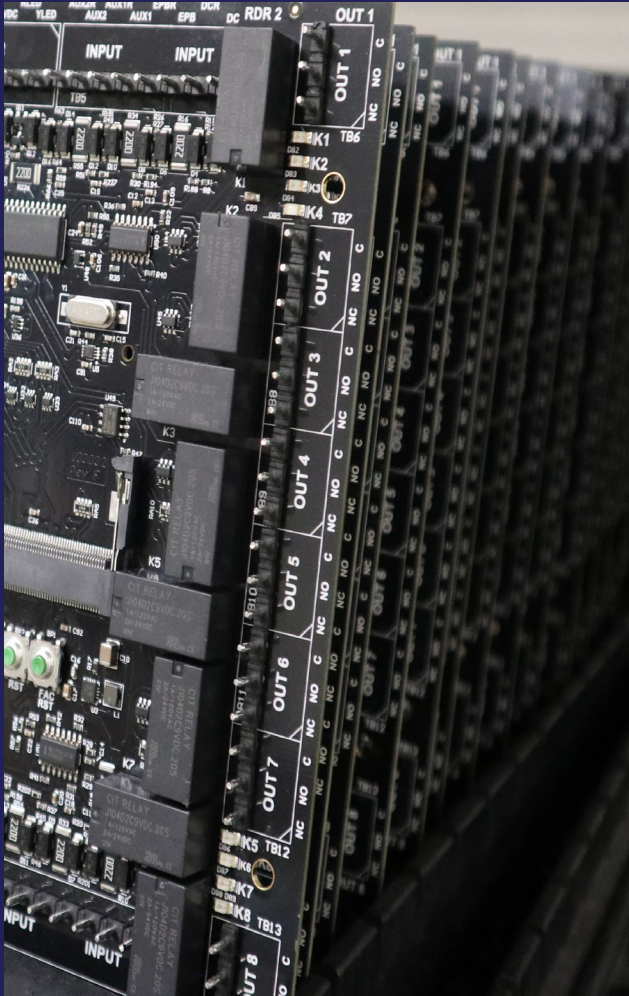


[www.apollo-security.com](http://www.apollo-security.com)



# HARDWARE MANUFACTURER

---



## Experienced Partner

Apollo Security is an established leader in the Access Control Security industry, providing superior hardware products supported by innovative software solutions for over 30 years. A world-wide network of sales offices and dealers insures comprehensive support for all types of installations.

## Manufacturing Advantage

All Apollo products are designed and manufactured at the company headquarters in the USA, eliminating the uncertainties that can arise with overseas manufacturing or outsourcing to third-party developers. Apollo's design team has over 100 years of cumulative experience in the industry. All processes are guided by a Quality System that is audited yearly to certify compliance with the ISO 9001:2008 standard.

## Founded On Security

Core staff is comprised of talented individuals with experience in defence, aerospace, military and heavy industry, giving Apollo unique insight into the needs of clients. Building on experience, personnel work closely with current leaders of top industries to assess new needs that can be incorporated into products and support activities.

# SOLUTION PROVIDER

---

## Total System Solution

Apollo provides a complete, robust software system that takes full advantage of its hardware platform. The APACS software package not only provides enterprise level access control, but serves as a base for integration of all systems within an organization including video, human resources, safety, and building controls.

## Support Services

A world-wide network of sales offices and dealers insures comprehensive support for all types of installations. Complete training is available for partners and customers at company headquarters, regional offices or customer premises. Companies can leverage the experience of Apollo engineers by utilizing turnkey on-site services to see your project from bidding and planning through implementation phase.

## Global Markets

Apollo's reach is truly global with systems installed in over 70 countries. At home in the toughest of conditions, systems are found in use at military sites, heavy industry, oil and gas, pharmaceutical, research sites hospitals and ports. Highly integrated and readily customizable, Apollo competes with the largest companies in the security industry, excelling in maintaining close customer relationships and being ready to meet dynamic needs.



# INDUSTRIES

---



## Oil and Gas

Understanding the complex needs of exploration, construction and production, Apollo provides solutions for large card populations while addressing complex safety needs.

- Support for card populations of over 1 million cards
- Rugged mobile devices
- ATEX Hazardous area and extreme environment solutions
- Integration with control systems



## Pharmaceutical and Research

Providing a flexible platform for security and human resources management with multi-site solutions and configurable reporting features.

- Interlocking door support for clean rooms
- Integrated Guard Tour
- Human resources custom integrations
- Elevator support with feedback



## Aviation and Military

Robust features for controlling entry based upon 100% verification techniques with an accurate historical information. Encryption and operator restriction to meet highest standards.

- Multiple biometric technology support with central template storage
- Photo-cardholder verification
- Integrated digital video with event linking
- Custom maps with real-time status



## Banking

High-security and fault tolerance for areas of extreme importance including the need to control and track occupancy.

- High-security modules for securing door strike wiring
- Advanced turnstile support
- Email notification based on event
- Two-man rule/occupancy control





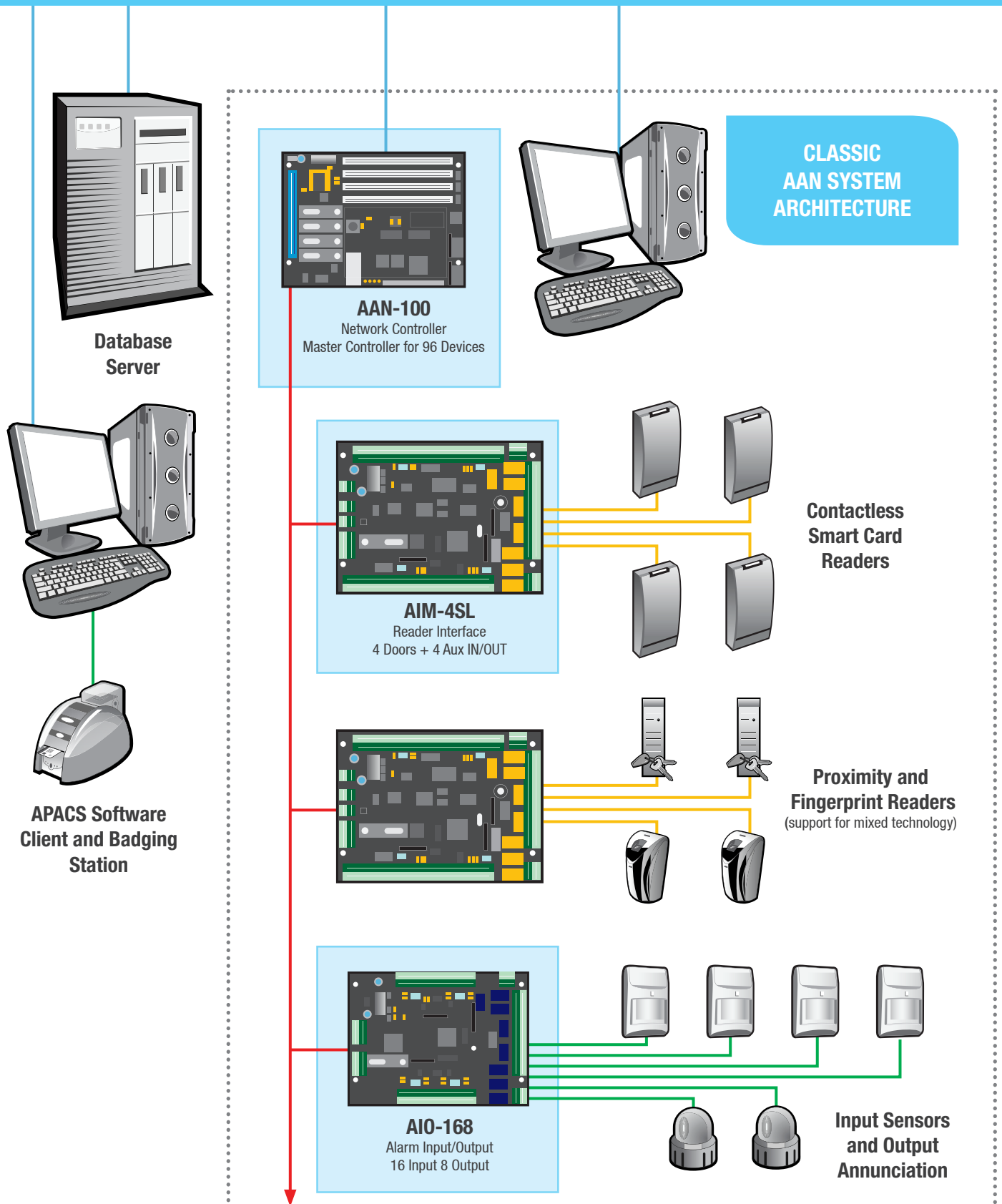
# EXPERIENCES

## Proven Performance

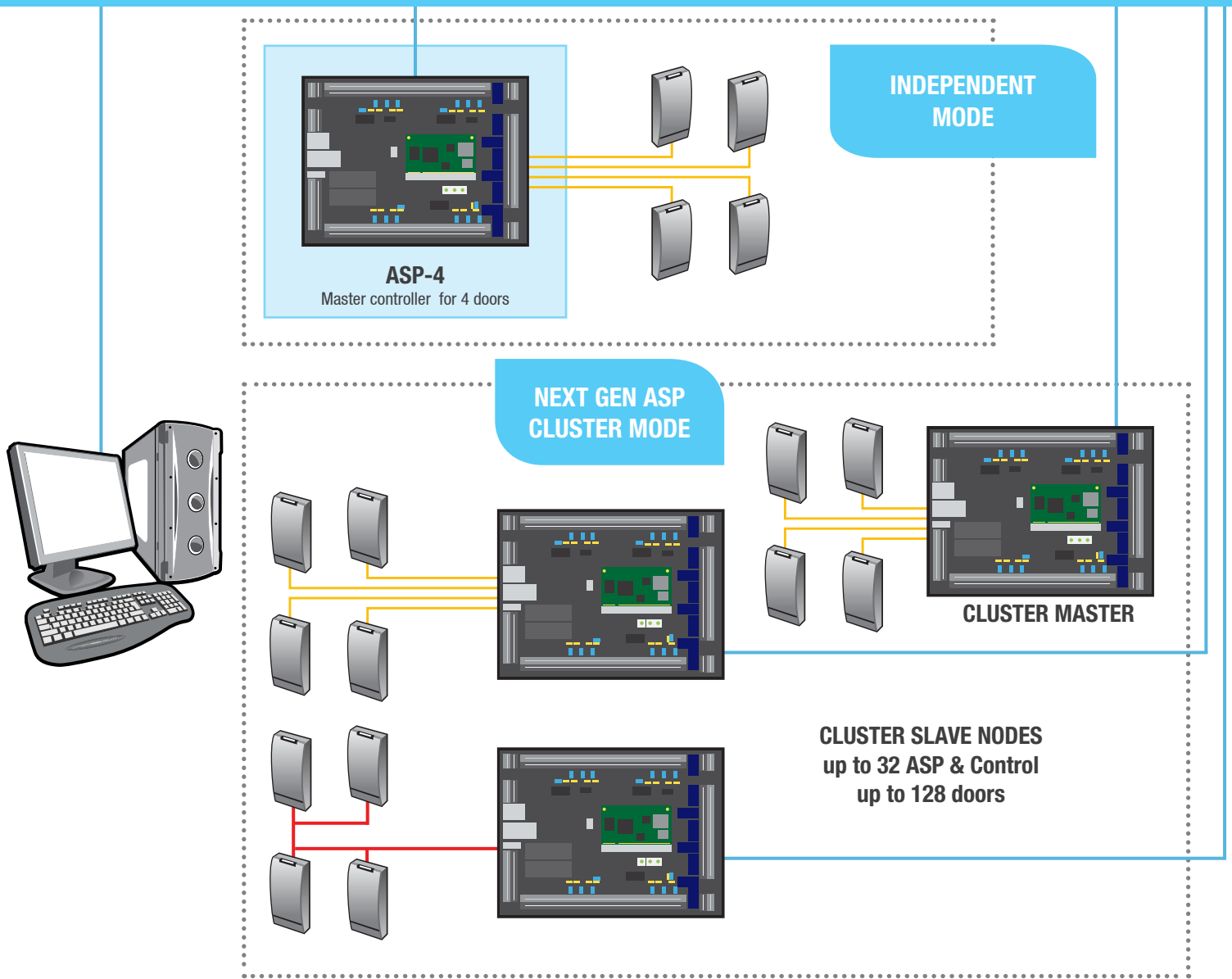
Apollo systems are in use at some of the most secure sites around the globe.

- Nuclear Power Plants; European power and research sites
- Seaports in Europe, Africa and Asia
- High profile Oil and Gas installations including one of the longest pipelines, largest GTL plant and many key refineries
- Kashagan, South China Sea, South America, North Sea and Middle East/Africa Oil and Gas facilities
- Banking facilities including several national reserve and engraving and printing facilities
- Airports including USA, Moscow area, Middle East
- Military facilities in US, Iraq, Afghanistan and other countries
- Many more sites worldwide...

# APOLLO SYSTEMS FLEXIBLE ARCHITECTURE

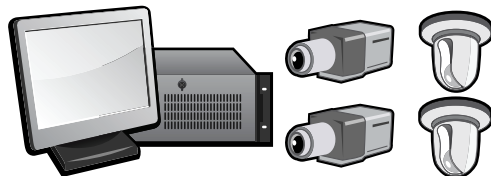


## ETHERNET



### Biometric Templates

Stored centrally in APACS database or on ASP controllers. Multiple template ability. Smart template distribution.



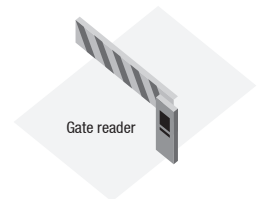
### Digital Video Integration

Easy viewing and event retrieval linked to ACS events. Support for Hikvision, Salient Systems, Samsung, Panasonic, Bosch, Infinova, Avigilon and Milestone video systems.



### OPC Interface



Integration to a wide variety of building controls, industrial equipment and third party systems.



### Advanced Barriers

Support for a full range of gates, turnstiles, bollards, mantraps, prison screw locks and more.

 **Network Communications**  
 **RS-485 Serial/OSDP**

 **Wiegand**  
 **Other Connections**





### **Located in Newport Beach, California,**

Apollo's modern 20,000 square foot facility is a convenient three minutes from the Orange County John Wayne Airport, one hour from Los Angeles or San Diego, and just 10 minutes from the Pacific Ocean, with major hotels, fine restaurants and world class recreational facilities nearby.



**3610 Birch Street  
Newport Beach, CA 92660-2619, USA  
Tel: +1 949 852 8178 | Fax: +1 949 852 8172  
[www.apollo-security.com](http://www.apollo-security.com)**