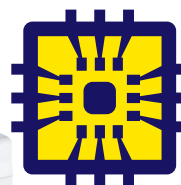


### ACCESS CONTROL



### DIGITAL VIDEO



**APOLLO**  
intelligent security solutions



### BUILDING AUTOMATION



*Your site's security is only as strong as the information it delivers. Why take risks when so much is at stake? Stay in control—track movements, monitor events in real time, and gain a complete overview when it matters most. With APACS, you can oversee and manage security across your entire organization. Trusted by the world's most sensitive sites, APACS is the global standard for mission-critical security.*

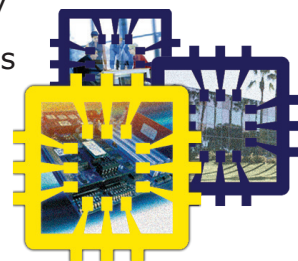
With over 40 years of experience, Apollo Security's Access Control and Alarm Monitoring System (APACS) is the culmination of decades of research, innovative design, and real-world feedback from security professionals protecting the world's most secure sites. Built for flexibility and reliability, APACS seamlessly scales from perimeter security to fully integrated, enterprise-level solutions—ensuring unmatched protection for any organization.

#### **Integration**

Don't just manage Access Control, take charge of your entire security system. APACS supports a full range of Digital/Network Video Recorders (DVR/NVR) with a consolidated interface. APACS supports digital video products from Panasonic, Hanwha, Avigilon, Pelco, Vicon, Verint and Milestone as well as ApolloVideo and ApolloVision products. A full featured OPC Client enables monitoring and control of building infrastructure and factory automation equipment.

#### **Trusted High-Level Security**

In use at some of the most secure places around the world including military facilities, nuclear power plants and oil & gas industry installations, APACS has been proven time and time again. Taking control of security has never been easier with features like Windows Active Directory single sign-on, central storage of multiple biometric templates and easy enrollment of FIPS 201 credentials.



# Core Components



APACS Also supports multiple reader technologies including Proximity, Biometric, Smart Card, OSDP Secure Channel as well as turnstile, barrier, man-trap, prison bolt locking systems are also supported.

The screenshot shows the 'Candidates' window in the 'System' application. The window has a title bar with 'System', 'View', 'Candidates', and 'System' buttons. Below the title bar is a menu bar with 'Candidates', 'Card Number', 'Last Name', and 'First Name' options. The main area is a table with the following columns: 'Candidate ID', 'Last Name', 'First Name', 'Department', 'Card Number', 'Date Faced', 'Design Name', and 'Action'. The table is currently empty, showing only the column headers.

The screenshot displays the 'APACS 3.0 Professional Cardholder Configuration' application. The interface includes a menu bar (System, View, Cardholders, Settings, Help) and a toolbar with icons for file operations and card management. The main workspace is divided into three primary sections:

- Cardholders List:** A table on the left showing a list of cardholders. The visible entries are:
 

Cardholder ID	Last Name	First Name	Michael	John
613	Jones	James		
614	Jones	James		
615	Jones	James		
616	Jones	James		
617	Jones	James		
618	Jones	James		
619	Jones	James		
620	Jones	James		
621	Jones	James		
622	Jones	James		
623	Jones	James		
624	Jones	James		
625	Jones	James		
626	Jones	James		
627	Jones	James		
628	Jones	James		
629	Jones	James		
630	Jones	James		
631	Jones	James		
632	Jones	James		
633	Jones	James		
634	Jones	James		
635	Jones	James		
636	Jones	James		
637	Jones	James		
638	Jones	James		
639	Jones	James		
640	Jones	James		
641	Jones	James		
642	Jones	James		
643	Jones	James		
644	Jones	James		
645	Jones	James		
646	Jones	James		
647	Jones	James		
648	Jones	James		
649	Jones	James		
650	Jones	James		
651	Jones	James		
652	Jones	James		
653	Jones	James		
654	Jones	James		
655	Jones	James		
656	Jones	James		
657	Jones	James		
658	Jones	James		
659	Jones	James		
660	Jones	James		
661	Jones	James		
662	Jones	James		
663	Jones	James		
664	Jones	James		
665	Jones	James		
666	Jones	James		
667	Jones	James		
668	Jones	James		
669	Jones	James		
670	Jones	James		
671	Jones	James		
672	Jones	James		
673	Jones	James		
674	Jones	James		
675	Jones	James		
676	Jones	James		
677	Jones	James		
678	Jones	James		
679	Jones	James		
680	Jones	James		
681	Jones	James		
682	Jones	James		
683	Jones	James		
684	Jones	James		
685	Jones	James		
686	Jones	James		
687	Jones	James		
688	Jones	James		
689	Jones	James		
690	Jones	James		
691	Jones	James		
692	Jones	James		
693	Jones	James		
694	Jones	James		
695	Jones	James		
696	Jones	James		
697	Jones	James		
698	Jones	James		
699	Jones	James		
700	Jones	James		
- Edit Card Issue:** A central pane showing details for a card issued to 'John Hancock'. It includes fields for Card Number (0000), Cardholder (John Hancock), Access Levels, Privileges, and Expiry Date (06/01/2009 to 06/01/2010). A photo of John Hancock is displayed.
- Cardholder:** A right-hand pane showing details for the selected cardholder, including Cardholder ID (000), First Name (John), Last Name (Hancock), Title, Department, and Signature.

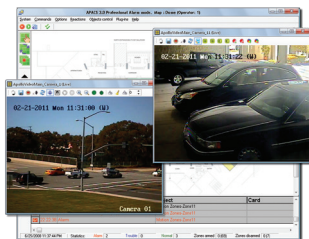
The bottom of the window features a 'Signature Sheet' with a signature of 'John Hancock' and a 'Signature Sheet' button.



# Enterprise Features

## Digital Video Integration

The APACS Universal Video Interface provides a common configuration and viewing interface for all supported DVR/NVRs. Viewing and control from monitoring station maps and video retrieval from events on monitoring and reporting stations. Support for a wide range including Salient, Hikvision, Panasonic, Bosch, Samsung, Verint, Vicon, Pelco and Milestone products.



## APACS Web & Android Mobile Reader

Browser based client for desktop, tablet or mobile provides reporting, control, monitoring and card management without installing software. User customizable web dashboard with grids and charts for system analysis. Android Mobile Reader application provides verification, access and time and attendance functions.

## Visitor Management

Visitor tracking with web interface including pre-registration, full appointment display, escort control per reader and pre-configured reports for an easy overview of guests at your facility. Optional interface for Easy Lobby™ Visitor Management software.

## Advanced Biometric Support

Storage of multiple biometric templates in APACS database with automatic downloading to fingerprint and hand geometry readers. Easy enrollment of users from any badging station. Support for Suprema, Morpho Sigma, Bioscrypt/L1, and Schlage biometric readers.

## Global Anti-Passback & Mustering

Full global anti-passback area control including maximum/minimum occupancy, open/close, manual movement by operator, nested areas, hardware reactions by occupancy and instantaneous as well as historical reports. Mustering features for hazardous and safe area control to easily manage evacuation during emergency situations

## Apollo System Highlights

- Full featured reporting including pre-configured reports for Visitor Management and Employee Attendance.
- 256-bit AES encryption protects all network data communication and database passwords, IPv6 Support
- Support for Microsoft SQL Server database.
- SMTP support for email notification of system events.
- OPC Alarms/Events Client for sending custom messages to APACS from sensor hardware. Writing of OPC Data for control systems.
- Single Sign-on compatible with Windows Active Directory
- Webservices API allows third party interface for events, cards, control and event stream
- High Level Interface for Otis, Kone and Tyssen elevator systems
- Use Limit to control number of times a card is used before expired
- Threat Level to lock down sites during alert situations

## Powerful Badging Routine

Full-featured integrated badge design module features advanced photo manipulation including batch image processing and automatic conversion/modification. Multiple card designs per card holder, barcode and mag card encoding.



Advanced Features

## System Requirements

	Database/Hardware Server	Client Station (Monitoring, Badging)
Processor	Intel Core i7 (11th generation)	Intel Core i5 (11th generation)
Memory	32 GB (minimum)	16 GB (minimum)
Hard Drive (min. free space)	256 GB (SSD Recommended)	128 GB (SSD Recommended)
Network Card	Gigabit Ethernet	Gigabit Ethernet
Graphics card	16 MB Memory XGA	Dedicated video card recommended when APACS Video Integration feature is enabled.
Database	MS SQL Server Express (included), MS SQL Server 2017, 2019, 2022	Server database
Operating System	Microsoft Windows 11, 10, 8.1, 8, Pro-Ult-Ent Windows Server 2019 or above	Microsoft Windows 11, 10, 8.1, 8, Pro-Ult-Ent Windows Server 2019 or above
Other	Keyboard & Mouse, 1 Serial Port, 1 USB Port, External periodic backup device (NAS or USB HDD)	Keyboard & Mouse, 1 Serial Port, 1 USB Port

## APACS Pro-X **NEW!!**

Previously APACS Express, the APACS PRO X is a free-to-use Apollo APACS Software with complete APACS PRO capabilities and a higher limit of 36 readers. APACS PRO X also includes **1 free APACS Web**, **8 biometric device** support, and video support for **36 cameras**.

## APACS Pro

Comprises an advanced security management software package. Integrates access control with digital and analog video equipment, visitor management systems, HVAC and lighting control systems, public address and paging systems. APACS Pro's Reaction mechanism provides a powerful programming interface for unlimited integration possibilities. Includes all features of APACS Standard.

- DVR/CCTV Control
- HVAC & Building Control via OPC
- Reaction/Message Mask Mechanism for advanced software control of hardware and software
- Customized graphic displays according to actual hardware status
- Live Video Verification
- Access Level assignment automatic by Cardholder Group

## APACS Standard

Full featured system control with the added capability of displaying events and state of hardware on interactive graphical maps at the guard station. For easy card issuing, full featured badge design and magnetic card encoding. Full featured Guard Tour using existing system objects.

- Customized interactive graphic maps with user created icons, permissions and storage formats
- Full featured badge design module with advanced photographic manipulation
- Real-time visitor status tracking
- Global Anti-Passback and Hazardous Area Mustering Management
- One-click video retrieval in reports
- Biometric Template Support

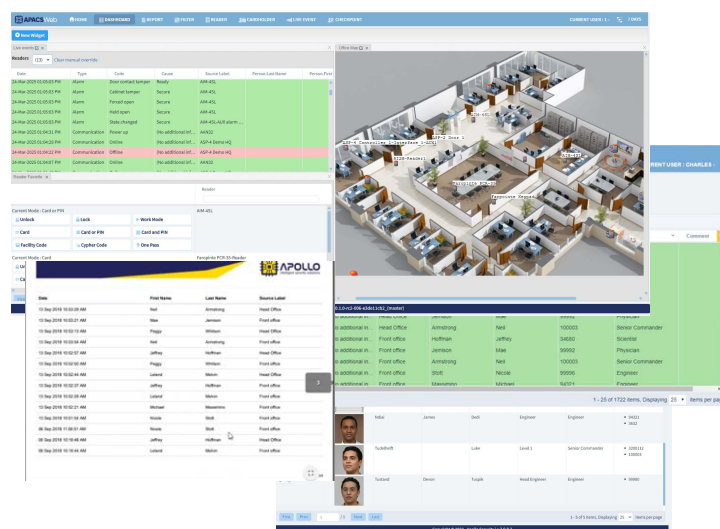
### PROGRAM UPDATES - Version 3.10

- Support for ASP downstream boards
- Support for Elevator Access Level with ASP board
- ASP Installation tool
- Webservices API
- Enhanced support for FIPS credentials
- Threat Level, Use Limit, Sabbath mode for ASP
- Assign access by strike relay or area

## APACS Web

Apollo APACS Web is a user friendly web client for system monitoring, controlling as well as reporting. You can use APACS Web on any PC, Tablet or Mobile Devices. Enjoy free 1 APACS Web license when you purchase an Apollo System!

- Live Checkpoints
- Live Events
- Cardholder Management
- Reader Control
- Custom Report Header
- Maps and Charts
- Custom Dashboard



**3610 Birch Street**  
**Newport Beach, CA 92660-2619, USA**  
**Tel: +1 949 852 8178 Fax: +1 949 852 8172**  
**www.apollo-security.com**

